



GMT MONTHLY MEMBERSHIP PROGRESS REPORT

Results as of: 1/31/2017

Multiple District 31

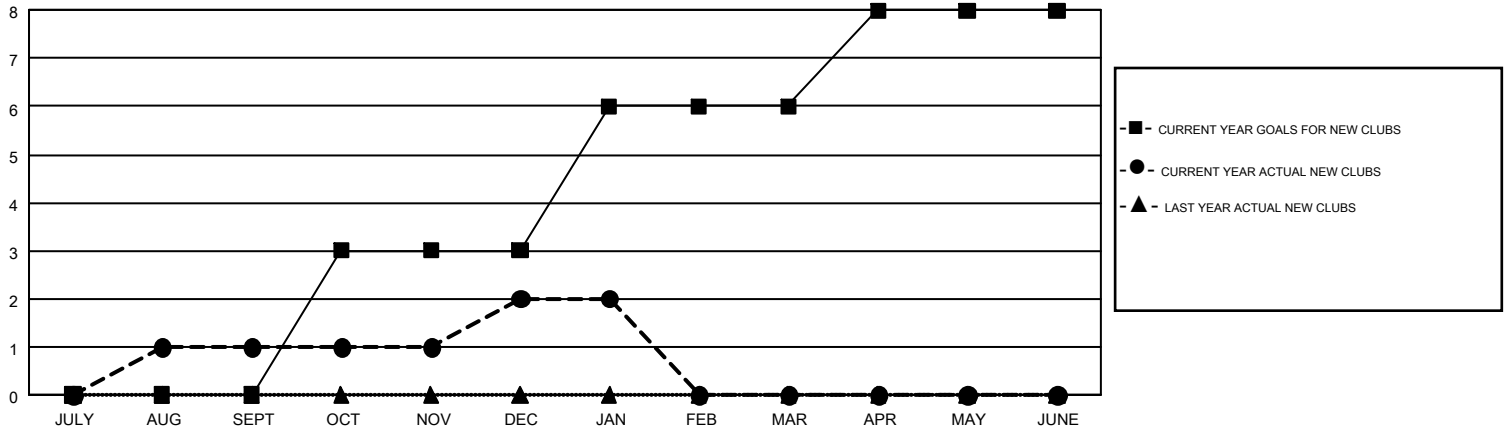
LOCATION: NORTH CAROLINA

GMT: HARVEY WHITLEY

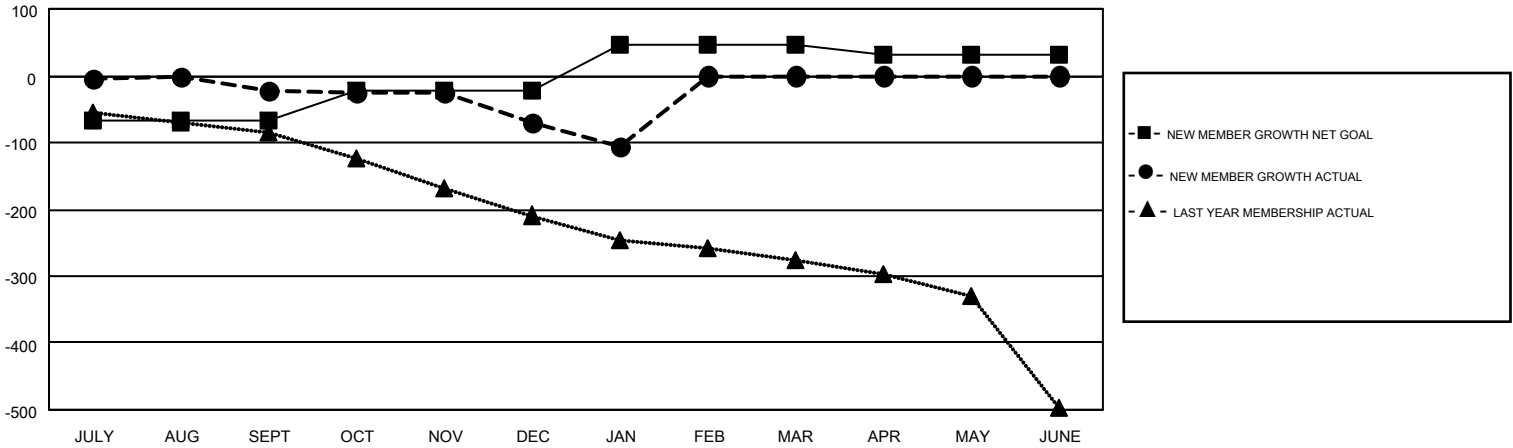
GMT CA 1

Clubs				Members			
RESULTS FOR 2016-2017				RESULTS FOR 2016-2017			
QUARTER	NEW CLUB GOAL	NEW CLUBS	DROPPED CLUBS	QUARTER	NEW MEMBER GROWTH NET GOAL (not reinstated or transfers)	NEW MEMBER GROWTH ACTUAL (not reinstated or transfers)	DROPPED MEMBERS ACTUAL (including transfers)
JULY/AUG/SEPT	0	1	0	JULY/AUG/SEPT	-66	211	233
OCT/NOV/DEC	3	1	3	OCT/NOV/DEC	43	127	175
JAN/FEB/MAR	3	0	1	JAN/FEB/MAR	68	46	83
APR/MAY/JUNE	2	0	0	APR/MAY/JUNE	-13	0	0

GOALS AND ACTUAL NEW CLUBS CUMULATIVE



GOALS AND ACTUAL MEMBERS CUMULATIVE



DROPPED CLUBS: 4	119 CLUBS OF 306 ADDED 1 OR MORE NEW MEMBERS	<u>GENDER DISTRIBUTION</u>	
<u>DROPPED MEMBERS</u>		MALE	4,430 (70.67%)
DECEASED	80	FEMALE	1,839 (29.33%)
CLUB CANCELLED	2	TOTAL FAMILY UNIT MEMBERS	
OTHER	409	1,310	
TOTAL	491	FAMILY MEMBERS PAYING HALF DUES	
		669	

[CLICK HERE FOR CUMULATIVE MEMBERSHIP DATA](#)